

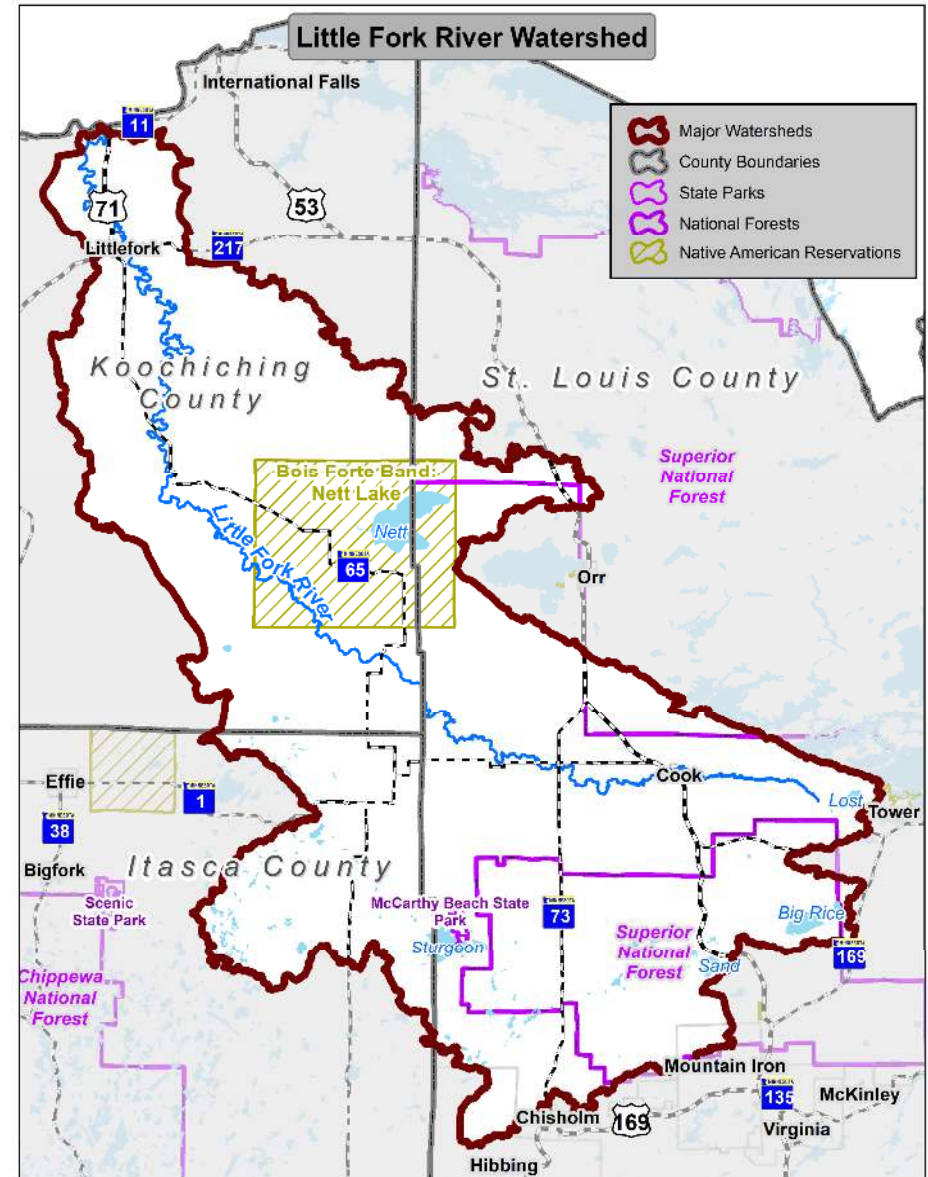
Little Fork River WATERSHED



Public Kickoff Meeting

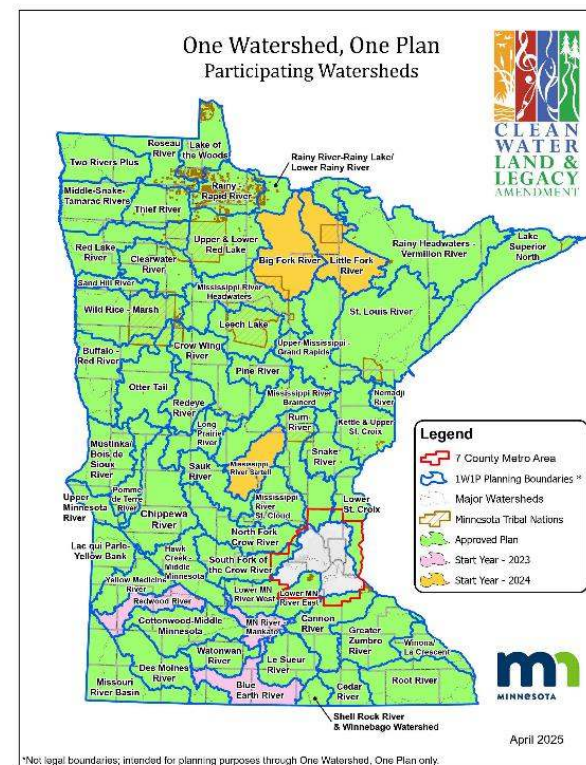
Welcome!

- Planning area



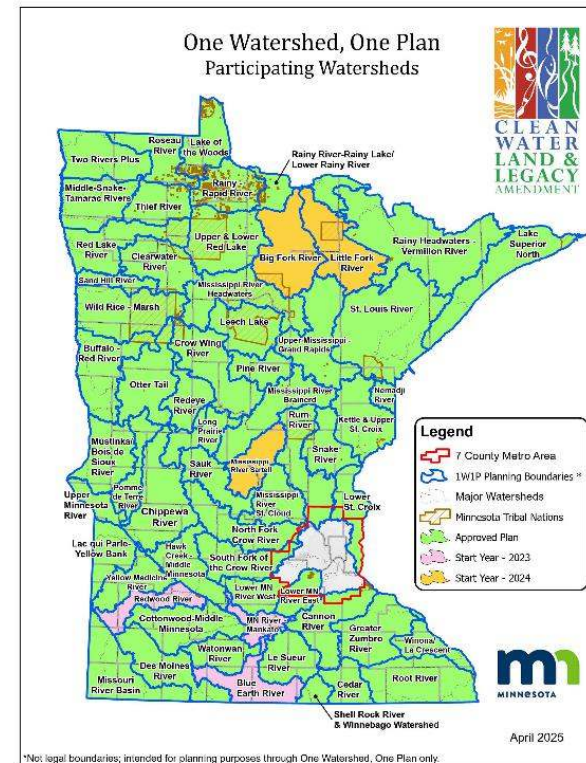
What is One Watershed, One Plan?

- State-wide program run by the Board of Water and Soil Resources (BWSR)
- Aligning planning along watershed boundaries
- A local plan, written by locals, with local priorities



What is One Watershed, One Plan?

- Utilizes existing funding mechanisms and authorities
- Voluntary actions
- Actions are prioritized, targeted, and measurable

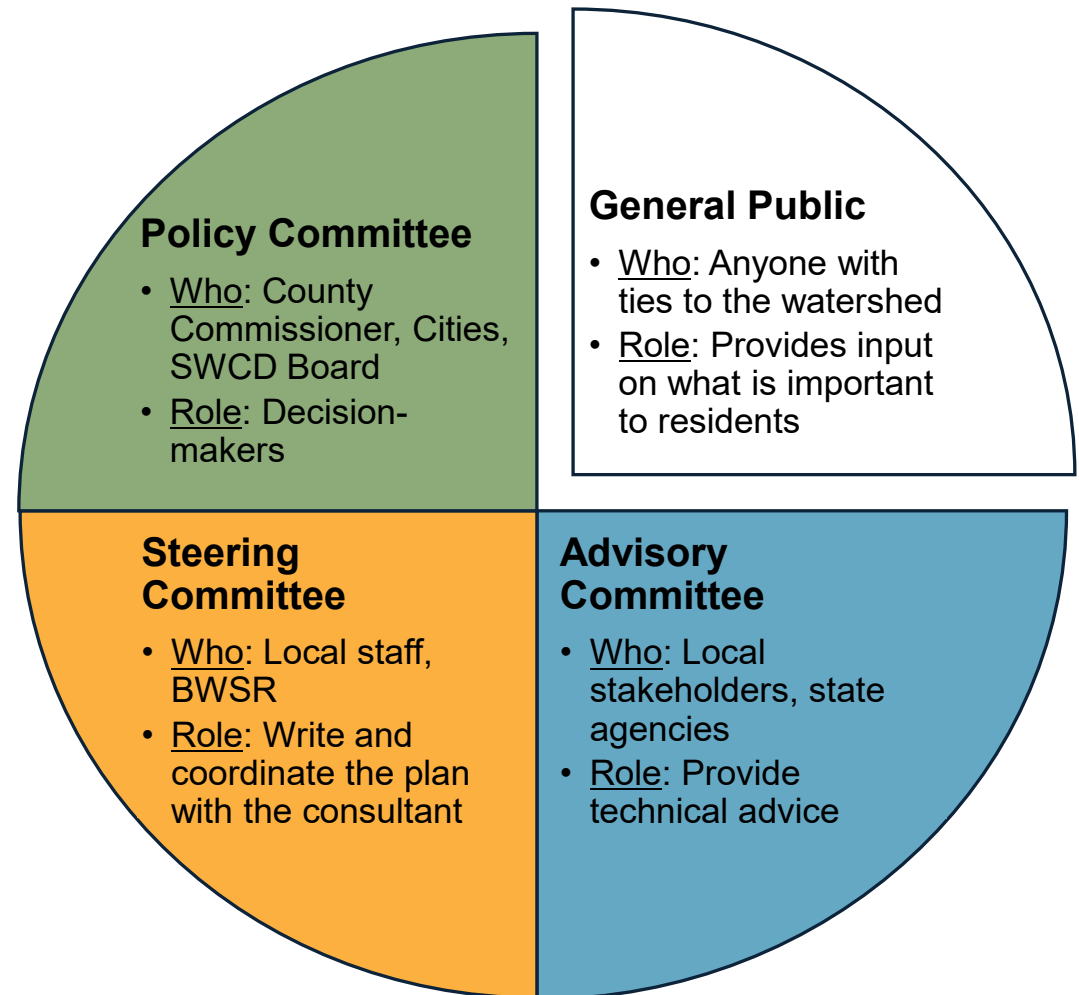


What is One Watershed, One Plan?

- Provides non-competitive state Clean Water Fund dollars to the watershed
- All for local priorities
- 10-year plan that is assessed and can be altered as needed



Who is involved?



City of Littlefork



What does the plan address?



Lakes & Streams

- Nutrient runoff
- Bacteria runoff



Forests, Wetlands, and Peatlands

- Forest management and protection
- Wetlands and peatlands



Urban Stormwater and Drainage

- Ditching
- Flooding
- Shoreline / streambank erosion

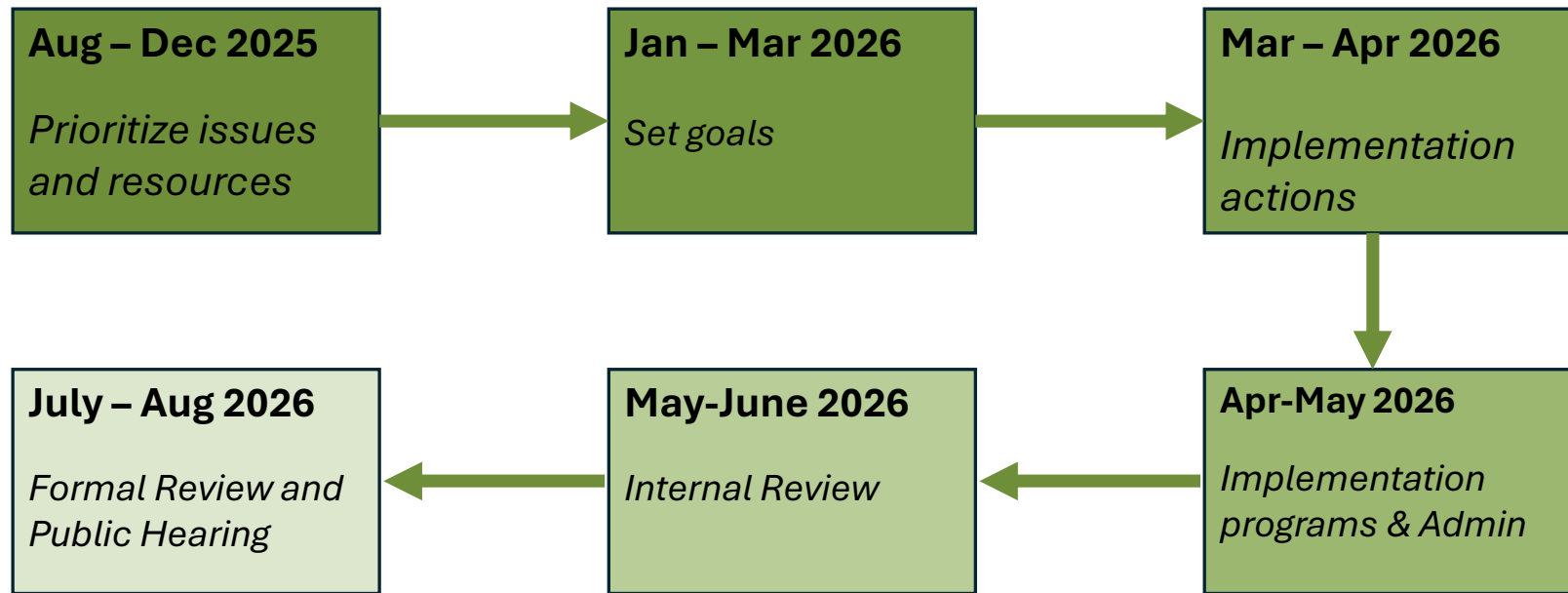


Farms & Groundwater

- Quality
- Quantity
- Agriculture



What is the plan timeline?



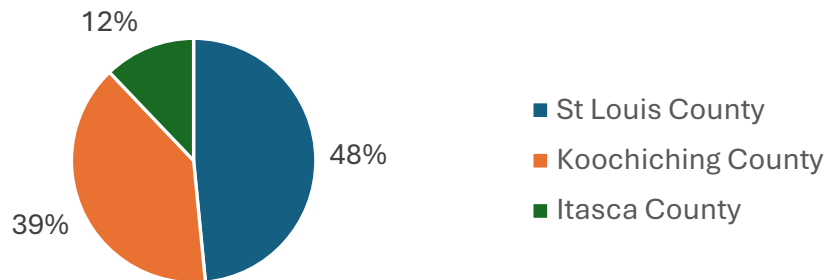
Plan implementation



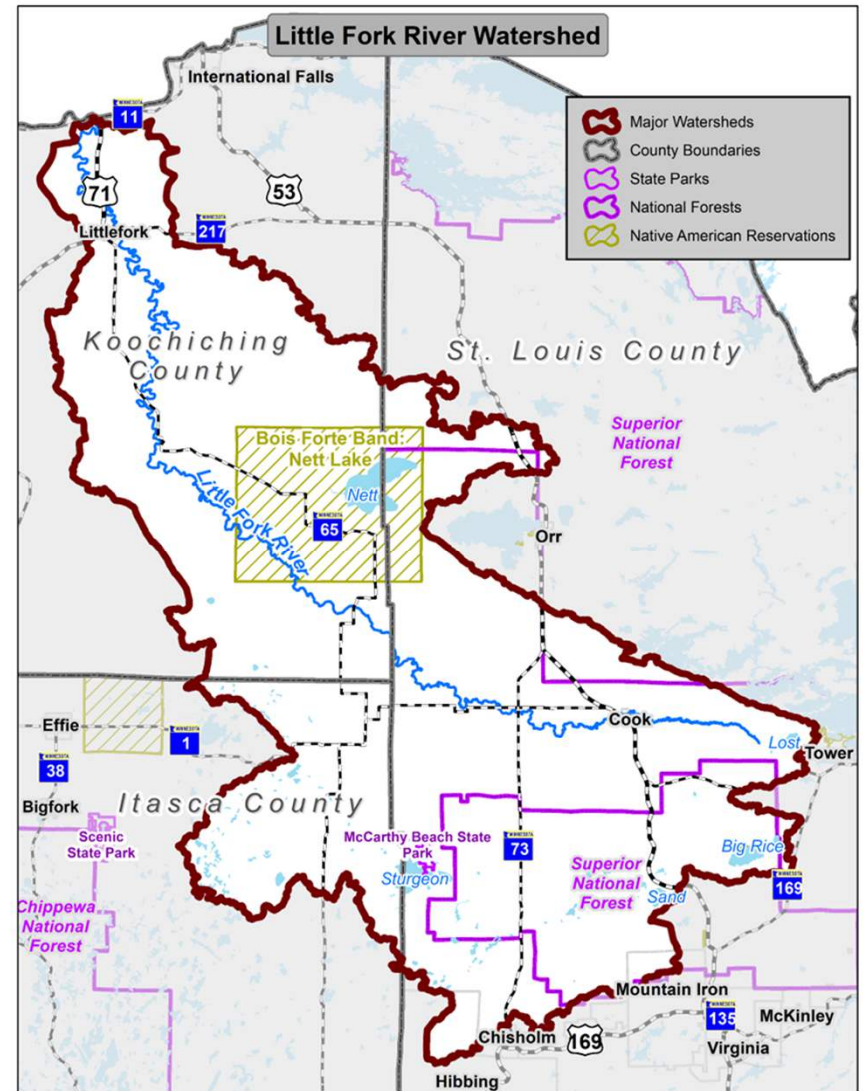
- Local staff will implement the Plan as a partnership
- Partnership will receive state funding to assist with water quality implementation
- Partnership will use existing funding or seek additional funding to help with other aspects of the plan



About the watershed

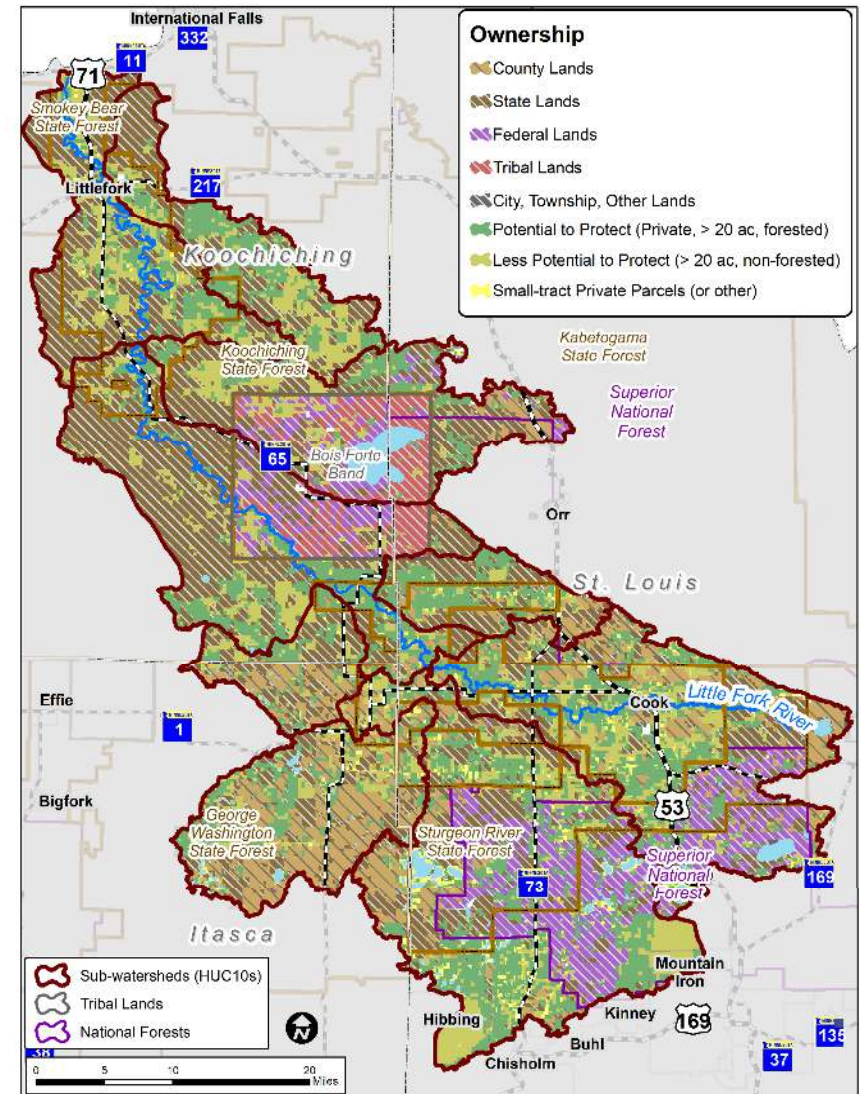


- Approximately 1.2 million acres
- Flows into Rainy River 11 miles west of International Falls



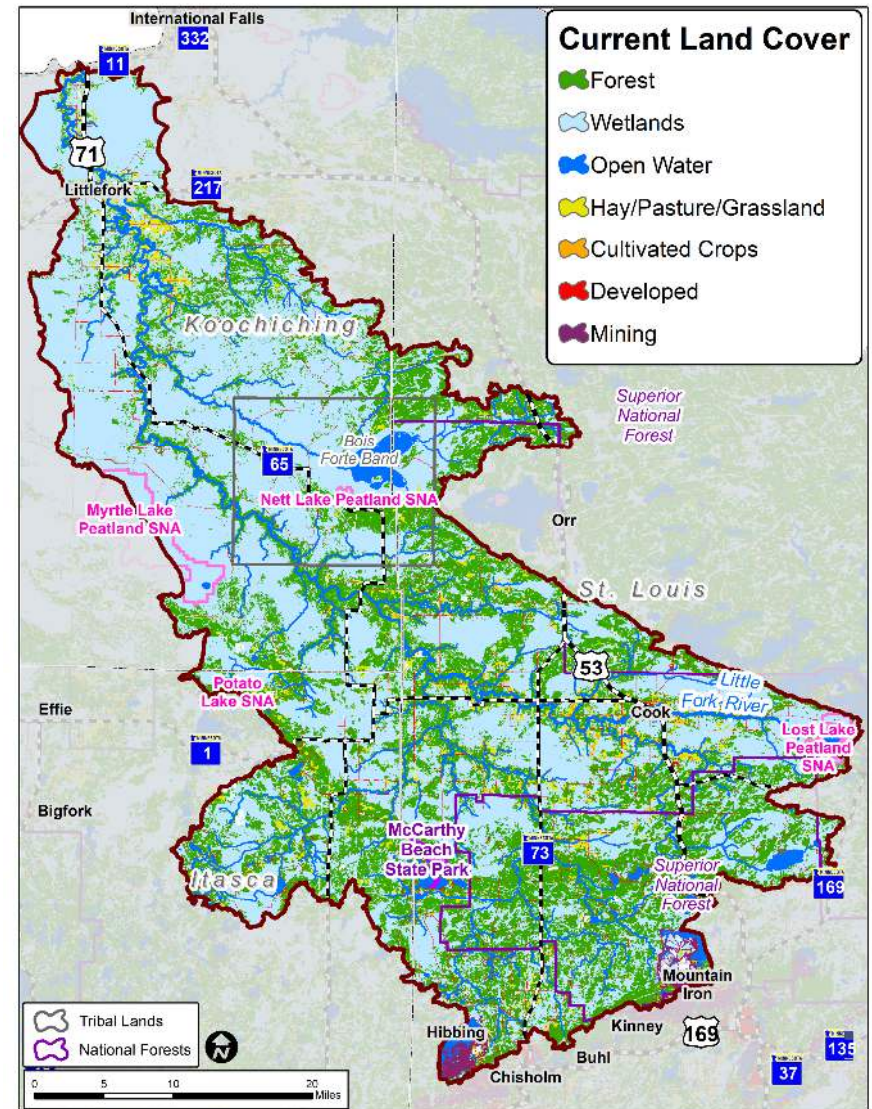
Land ownership

- 52% state or federal land
- 4% Tribal Lands
- 44% private lands
 - ▶ *Actions on these lands!*



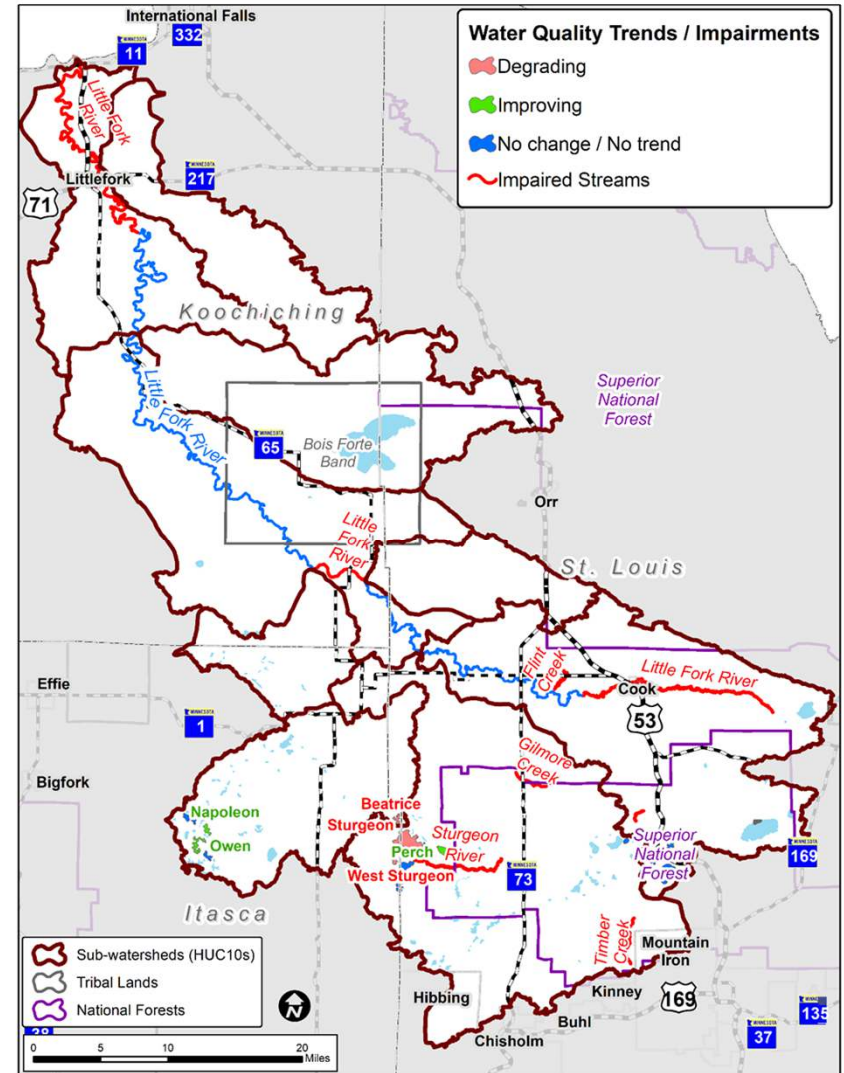
Peatlands

- Peatlands cover 40% of the watershed
- Estimated 93-98% of pre-settlement wetlands remain in the region
- Peatlands improve water quality, increases water storage, store carbon, and provides habitat



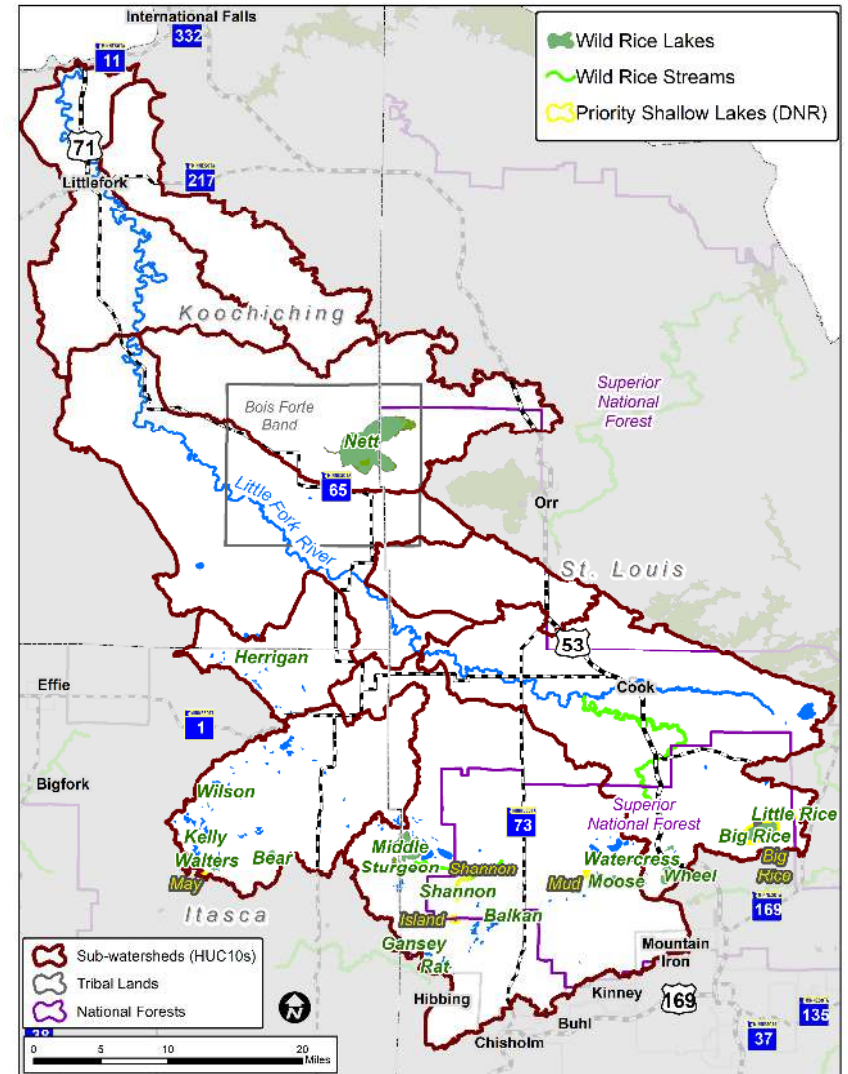
Surface water quality

- 12 Impaired Streams
 - Turbidity, sulfate, E. Coli, total suspended solids
- 14 lakes impaired for aquatic consumption (Mercury)



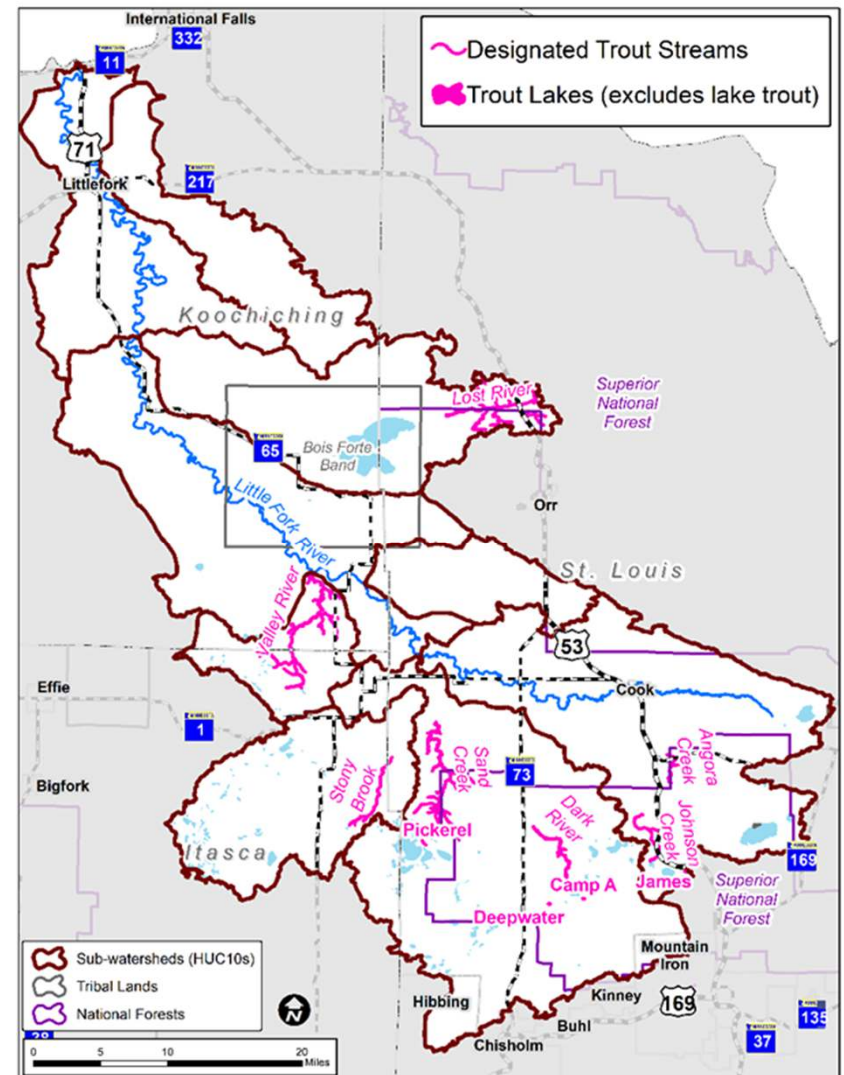
Wild Rice

- A number of wild rice lakes and streams
- Nett Lake sector is said to be the largest producer of wild rice in the United States.



Habitat

- 44 lakes of biological significance
- 4 trout lakes
- 4 Scientific Natural Areas



Your input is important!

- ☐ **Map:** place a dot where you live in the Little Fork River Watershed
- ☐ **Resource Booths:** Visit booths that highlight different resources. Show what resources are important to you or any specific issue/problem locations in the watershed.
- ☐ **Penny Jars:** Vote on which issues you would spend money to fix or protect
- ☐ **Survey:** Take the online survey using this QR code (paper copies also available)



Questions?

